

Contents

Revision History	3
Introduction.....	3
Upgrading Using SOLUS	5
Backing up SIMS and FMS	5
Permissions	5
SLG Compatibility.....	6
Accessing Other SIMS Applications	6
Included in this Release.....	7
Admissions.....	8
Analysis	9
Assessment.....	9
Attendance.....	10
Catholic Education Service for England and Wales Census 2010 Return.....	11
Cover	12
CTF.....	14
Dinner Money 7	15
EMA.....	17
Examinations Organiser 6.74	17
Fees Billing	21
FMS 6.124	23
Independent Returns 2010 (ASCIS).....	25
Independent Returns 2010 (ISC).....	25
Lesson Monitor.....	25
Options 5.70	27
Personnel.....	28
PLASC Return 2010	28
Profiles	29
School Census Spring Return 2010	29

SIMS 2009 Autumn Main Release

SIMS 7.124

School Workforce Census Spring Return 2010	30
SIMS Learning Gateway 2	30
SOLUS ³ Phase 1	30
SQL Server 2008 Migration	31
STAR	32
Updated Handbooks Available with this Release	34

Please read this release note carefully before installing or upgrading your software. Do not attempt any installation or upgrade without first making a fully restorable, verified backup of your SIMS system.

Revision History

Version	Change Description	Date
1.0	Initial release	06/11/09
1.1	Additional content regarding the availability of Attendance 6	09/11/09

Introduction

The SIMS 2009 Autumn Main Release (7.124) incorporates new functionality including SOLUS³ Phase 1, enabling the automatic distribution of SIMS updates to your workstation. This release also includes the SQL 2008 Migration Utility, containing SQL 2008 Express and a database migration tool for the conversion of SIMS and FMS databases from SQL 2005 to SQL 2008.

Enhancements have been made to Options 5, Assessment, Dinner Money, Fees Billing, Attendance and Lesson Monitor.



IMPORTANT NOTE: It is recommended that the SIMS 2009 Autumn Main Release is applied to existing installations by running SOLUS on the SIMS SQL Server.

This release also contains the School Census and School Workforce Census for Spring 2010, and the Independent ASCIS/ISCIS, PLASC and Catholic Education Services for England and Wales (CESEW) returns for January 2010. CTF has also been updated to version 9.0.



WARNING: The School Census Autumn 2009 return and the School Workforce Census Autumn 2009 return must be completed and accepted by the authorising body before upgrading to the SIMS 2009 Autumn Main Release (7.124).

When the SIMS 2009 Autumn Main Release is applied, the 2008/2009 School Census and School Workforce Census menu routes are removed.



IMPORTANT NOTE: The SIMS 2009 Autumn Main Release is not supported in a live environment running Windows 7. Customers using Windows 7 should only run this release in a test environment. Both SIMS and FMS will be supported on Windows 7 in the SIMS and FMS 2010 Spring Main releases.

Generic Reporting

The content of the report output generated by clicking the **Print** button on any browser or detail page in SIMS displays only the information that is visible on-screen.

For example, from the **Detention Details** page (**Focus | Behaviour Management | Maintain Detentions**), clicking the **Print** button now produces a report containing only the information displayed on this screen.

Where to Find More Information

Release notes for previous releases can be obtained by clicking the appropriate menu link on the Home page of our SOLUS website (<http://www.capitaes.co.uk/solus>).

All handbooks referred to throughout this release note can be obtained from any of the following locations:

- The **Documentation** button on the **Home Page** in SIMS. Once open, click the **Handbooks** button, select the required category, then click the required handbook from the **Handbooks** page.
- SupportNet – copies of all handbooks are posted to SupportNet (<http://support.capitaes.co.uk>) and can be obtained by clicking the **Documentation** button on the Home page, then selecting **SIMS Handbooks** from the **Category** drop-down list and clicking the **Search** button.
- Copies of handbooks are now installed on the Central SIMS File server as PDFs and can be found in the S:\SIMS\Documentation folder (where S: indicates the location of your SIMS File server). Double-click the required PDF name to open the handbook.

If you are unable to obtain the required handbook using any of these methods, please email publications@capita.co.uk and we will be pleased to email a copy to you.



IMPORTANT NOTE: *Capita Children's Services has made this release note available in both Microsoft® Word (available from SupportNet) and PDF format to enable Local Authorities to edit the information supplied herein. Capita Children's Services cannot be held responsible for any changes, errors or omissions resulting from the subsequent editing of this supplied document.*

Editing School Numbers

It is no longer possible to edit the Local Authority Code, Establishment number or the DENI number (in the case of Northern Ireland) of the school, once it has been entered. This is in response to the problems created when new schools, commonly academies, are created from old ones. In the rare cases where the number of a school is genuinely changed or a mistake has been made, please refer to the *Modifying the School Number in SIMS* News Item (Resource Number **15723**) on SupportNet (<http://support.capitaes.co.uk>).

Upgrading Using SOLUS

The SIMS Online Update Service (SOLUS) enables you to download and run SIMS releases and patches via the Internet. This is achieved using the SOLUS2 Wizard.

For instructions on carrying out an upgrade, please refer to either the *SIMS SOLUS Wizard 2 User Guide* or the *SOLUS³ Phase 1* handbook (depending on the version of SOLUS you are using), which are available from the SOLUS website (<http://www.capitaes.co.uk/solus>).

Backing up SIMS and FMS

Where SIMS Personnel is used to generate Salary Projections in FMS, SIMS and FMS backups should be carried out at the same time. If one of the databases needs to be restored, the other database must be restored to the same point, i.e. if you restore the SIMS database, you must restore the FMS database to the same point and vice versa.



IMPORTANT NOTE: Backups are no longer zipped, because of the number of issues caused by zipping up backup files. Recent operating systems now allow the use of compressed folders, which are recommended for automatically compressing backups. Please refer to your operating system documentation for instructions on applying compression to a folder.

Permissions

A permissions spreadsheet listing all permissions relating to SIMS 7.124 can be accessed from our SupportNet website (<http://support.capitaes.co.uk>). Enter **PERMLIST** in the **Site Search** field then click the **Go** button.



IMPORTANT NOTE: From the SIMS 2009 June Main Release, permissions for the School Administrator user group has reduced access to staff data. Only the **Basic Details** and **Personal Information** panels are now displayed on the **Employee Details** page (via **Focus | Person | Staff**) for users with these permissions.

SLG Compatibility

SLG2 is guaranteed to support the previous two main releases of SIMS, inclusive of any main release it is shipped with (and any update releases in between).

Supported SIMS Versions with SLG2 Autumn Main Release

The SIMS Learning Gateway 2 Autumn Main Release can be used alongside the following versions of SIMS:

- **SIMS 2009 Autumn Main Release (SIMS 7.124)**
- SIMS 2009 August Update Release (SIMS 7.122)
- **SIMS 2009 June Main Release (SIMS 7.120)**

If you install the SIMS 2009 Autumn Main Release (SIMS 7.124) and continue to run an older release of SLG2, this is not guaranteed to work and is therefore not supported.

Accessing Other SIMS Applications

Applications such as System Manager, Schoolcomms, Examinations Organiser and Nova T-6 are now accessed from the **Focus** menu, e.g. **Focus | System**.

Included in this Release

This release includes fixes and enhancements in the following areas:

- Admissions
- Analysis
- Assessment
- Attendance
- Catholic Education Service for England and Wales (CESEW) 2010 Return
- Cover
- CTF
- Dinner Money 7
- EMA
- Examinations Organiser 6.76
- Fees Billing
- FMS 6.124
- Independent Returns 2010 (ASCIS)
- Independent Returns 2010 (ISC)
- Lesson Monitor
- Options 5.70
- Personnel
- PLASC Return 2010
- Profiles
- School Census Spring Return 2010
- School Workforce Census Spring Return 2010
- SIMS Learning Gateway 2
- SOLUS³ Phase 1
- SQL Server 2008 Migration
- STAR

Admissions

New Features

This release includes the following new feature:

- **Supporting Info for Applicant Ranking Report**
Reports | Run Report | Focus | Application

The **Supporting Info for Applicant Ranking** report provides supplementary information, enabling you to rank the applicants for the intake.

This report is applicable only to schools that control their own admissions (English Own-Admissions Authority schools). If this report is run by schools that do not control their own admissions, no data will be displayed because the data in the report is populated in SIMS by the import of an ADT file.

Enhancements

This release includes enhancements in the following areas:

- A number of pupil/student browsers have been amended to enable the search by Admission Number.
- LEA Notes have been added to the Reporting Dictionary.
- It is now possible to import an ATF file version 2010 (via **Routines | Admission | Import ATF File**).
- It is now possible to change a pupil/student's Enrolment Status, even when their DOA is not within the current academic year (via **Focus | Admission | Application**).

Fixes

This release includes fixes in the following areas:

- The **Current Age** field on the **Application** page now refreshes correctly when switching between application records (via **Focus | Admission | Application**).

Analysis

Fixes

This release includes fixes in the following areas:

- Pupil/students are now displayed on Pupil Tracking Grids if they have data for at least one of the groups in the grid (via **Focus | Assessment | Tracking Grids**).
- It is now possible to open a Group Analysis that contains out of date groups (via **Focus | Assessment | Group Analysis**).

Assessment

New Features

This release includes the following new feature:

- **Import and Export of Marksheet Notes**

Routines | Data In [Data Out] | Assessment | Import [Export]

It is now possible to export the notes attached to an aspect within a marksheet and to import them into another school system. An additional field has been included in the XML file to enable the collection of notes. This functionality is available to all schools and is a school to school process only at this time. It is not currently possible to import notes into the One software.

For more information, please refer to the *Importing and Exporting* chapter in the *Assessment in SIMS* handbook.

Fixes

This release includes fixes in the following areas:

- It is now possible to save an Assessment defined group (via **Focus | Groups | Assessment Defined Groups**).
- It is now possible to generate individual reports using the Wizard Manager (via **Tools | Performance | Assessment | Wizard Manager**).
- The Update (Own) Marksheet Data permission now enables you to update your own marksheets only (via **Focus | Assessment | Marksheet Entry**).
- The **Looked After** column heading on a marksheet is now populated for all pupil/students recorded as being In Care (via **Focus | Assessment | Marksheet Entry**).
- When re-opening a marksheet that contains coloured grade columns, any grades saved with the marksheet for these columns are now displayed (via **Focus | Assessment | Marksheet Entry**).

Attendance



IMPORTANT NOTE: By upgrading to the SIMS 2009 Autumn Main Release, Attendance 6 will no longer be available. If your establishment is a Pupil Referral Unit (PRU) and you need the information provided by the DCSF Absence Return for use with the PRU Census 2010, you should print this return before upgrading.

New Features

This release includes the following new features:

- **Bulk Editing Pupil/Student Involvement Details**

Focus | Attendance | Take Register

Details about the pupil/students involved in a behaviour incident or achievement can be entered using the bulk editing routine. The following details can be edited:

- the **Points** awarded
- their **Role** in the incident, i.e. participant, target, aggressor, witness, bystander (*Behaviour Incidents only*)
- were the **Parents Informed**, i.e. telephone, email, fax or letter
- the **Action Taken**, e.g. cooling off period, daily report, detention, discussed with student, fixed period exclusion, etc. (*Behaviour Incidents only*)
- the **Action Date** (*Behaviour Incidents only*)
- the **Award Given** e.g. commended, certificate, letter to parents or guardian, prize, etc. (*Achievement only*)
- the **Award Date** (*Achievement only*).

For more information, please refer to the *Taking the Register* chapter in the *Attendance in SIMS* handbook.

- **Resolving Conflicting Marks**

Routines | Attendance | Resolve Conflicting Session Marks

By default, SIMS automatically resolves conflicting session marks that have occurred because an existing mark has clashed with a mark that has been read from an OMR Registration sheet or OMR Absence sheet.

This routine enables you to view conflicting marks then select which the marks takes precedence in the pupil/student's attendance record.

For more information, please refer to the *Housekeeping Routines* chapter in the *Attendance in SIMS* handbook.

Enhancements

This release includes enhancements in the following areas:

- **Non-Compulsory School Age Date Range Functionality in Attendance Reports**

An option has been added to the **Group Analysis by Attendance Category** report and the **Group Analysis by Code** report, which enables you to restrict the report output to include students of a certain age (via **Reports | Attendance | Group Reports**).

By default, only students of compulsory school age are included in the reports. However, a different date of birth range can be specified by selecting the **Restrict by DOB Range** check box in the report browser, then entering the appropriate dates in the fields below.

- The read-only **Behaviour Today** column on the register now displays the number of today's behaviour incidents for each student, rather than an indicator that the child has had a behaviour incident recorded against them (via **Focus | Attendance | Take Register**).

Fixes

This release includes fixes in the following areas:

- When hovering over a cell in a register, where the cell is close to the edge of the page, the appropriate class information, minutes late and comments are now displayed (via **Focus | Attendance | Take Register**).
- Blank pages are no longer produced when printing the **Persistent Absence** reports (via **Reports | Attendance | Whole Group Student Reports | Persistent Absence Reports**).

Catholic Education Service for England and Wales Census 2010 Return

The SIMS 2009 Autumn Main Release provides the functionality to complete the Catholic Education Service for England and Wales (CESEW) Census 2010 Return. As part of the upgrade to the SIMS 2009 Autumn Main Release, the appropriate licence is applied so that all Catholic schools can run this return.

The return provides information on Catholic education from national to diocesan level.

- Reference Date England – 21/01/2010
- Reference Date Wales – 12/01/2010

The CESEW provide support to schools in the same way as they provide support for the spreadsheet-based Census. LAs are not expected to provide support for CESEW but a licence patch is available for LAs that are interested in this Census.

Cover

Enhancements

This release includes an enhancement in the following area:

- When attempting to assign cover to a member of staff who is scheduled to undertake PPA, a warning message asks for confirmation that you have selected the correct member of staff. For more information, please refer to the *Setting up Reasons, Rules, Rotas and Other Settings* chapter in the *Cover in SIMS* handbook.

Fixes

This release includes fixes in the following areas:

- It is now possible to assign cover for an examination with a zero duration, i.e. where the start time is the same as the end time (via **Tools | Cover | Generate Exam Room Closures**).
- Covers are no longer displayed on Cover Slips if the **No cover required for all the assignment requirements** option is selected (via **Focus | School | Arrange Cover**).
- The **Period Number** column now displays the whole period description on **Notice Board Summary** reports (via **Focus | School | Arrange Cover**).
- The performance of the Detect Timetable Changes routine has been improved (via **Tools | Cover | Detect Time Table Changes**).
- Duplicate rows are no longer displayed when printing the **Absence Statistics** report (via **Tools | Cover | Statistics | Absence**).
- Duplicate records are no longer displayed when printing the **Class Impact Analysis** report (via **Tools | Cover | Impact Summaries | Classes Impacted by Absence**).
- The unpinned resource list now refreshes each time the date on the Cover Diary is changed (via **Focus | School | Arrange Cover**).
- The **Weeks Free** column now calculates correctly on the unpinned staff list (via **Focus | School | Arrange Cover**).
- When editing an existing staff absence record, you can now select an **Absence Type** that is not mapped to the original **Reason for Absence** (via **Focus | School | Arrange Cover**). For more information, please refer to the *Recording Staff Absences and Room Closures* chapter in the *Cover in SIMS* handbook.
- If the room designated as in use for a class marked as 'ncr' is closed, the class room assignment is no longer automatically marked as 'ncr' and you can assign an alternative room (via **Focus | School | Arrange Cover**).

- In the browser of the Cover Diary, the figure displayed in the **Activities requiring attention/cover** column updates correctly for indirect cover (via **Focus | School | Arrange Cover**). For more information, please refer to the *Understanding the Cover Diary* chapter in the *Cover in SIMS* handbook.
- After using the **Zoom In** or **Zoom Out** functions on the Cover Diary to resize the page display, the page size remains in place until the Cover Diary is closed (via **Focus | School | Arrange Cover**). For more information, please refer to the *Understanding the Cover Diary* chapter in the *Cover in SIMS* handbook.
- When a part-time or supply teacher is booked and they have a non-class code of **Blank**, they are now available for cover (via **Focus | School | Arrange Cover**). For more information, please refer to the *Setting up Reasons, Rules, Rotas and Other Settings* chapter in the *Cover in SIMS* handbook.
- Amendments have been made to the non-class code settings and two new rules have been added (Auto and Manual and Blank). For more information, please refer to the *Setting up Reasons, Rules, Rotas and Other Settings* chapter in the *Cover in SIMS* handbook.
- If the teacher of a class is changed during the course of the academic year, only the new class teacher is now displayed in the usage history for a supply booking (via **Tools | Cover | Organisations and Bookings | Manage Bookings**).
- Days at the beginning of the current academic year are now being displayed correctly on the Cover Diary.
- The **Notice Board Summary** now displays a period where, in Nova, it had been set up on a day where no staff had been scheduled with a class or a non-class activity (via **Focus | School | Arrange Cover**).
- Where half-period mode is set up in Arrange Cover, Cover Statistics data is now displayed correctly on the detailed report (via **Focus | School | Arrange Cover**).
- A member of staff marked as 'Does not provide cover' is no longer displayed on the **Manage Rota** page (via **Tools | Cover | Manage Rotas**).
- The display of the output types (e.g. HTML, Notice Board Summary, etc.) has been improved (via **Focus | School | Arrange Cover**).
- The **Times** column on the **Cover Statistics** reports now displays the cover done, rather than the period length (via **Tools | Statistics | Cover | Statistics**).
- The Staff Weightings functionality has been enhanced to ensure that staff prioritizations calculate correctly (via **Tools | Cover | Manage Staff Weightings and Offsets**).

CTF

The version of CTF for export is now 9.0. The versions for import are 8.0 and 9.0.

New Features

This release includes the following new features:

- **Email Address Transfer via CTF**

The main email address for a contact is now transferred via CTF, providing an additional contact point for new pupil/students.

- **Transfer of SEN Provisions (Schools in Wales only)**

CTF can now be used to export and import SEN provisions from school to school, school to LA and LA to school (via **Routines | Data Out | CTF | Export CTF** and **Routines | Data In | CTF | Import CTF**).

- **Exporting a CTF to your Own School**

To enable the transfer of CTF files between parallel systems when trialling new applications, you can now select your own school's name from the **Destination School** drop-down list. (via **Routines | Data Out | CTF | Export CTF**).

- **Display of LA Number and Establishment Number (or DENI Number) when Selecting a Destination School in CTF Export**

To facilitate the selection of the correct school where there are multiple similarly named schools, the **Destination School** drop-down list now displays the LA Number and the Establishment Number (or the DENI Number for schools in Northern Ireland), as well as the school name (via **Routines | Data Out | CTF | Export CTF**).

- **Setting an Effective Date for CTF Import**

The **Effective Date** field has been introduced when importing a CTF straight on-roll, enabling the data and group memberships to be defined for a specified date. This defaults to today's date, but can be edited if required (via **Routines | Data In | CTF | Import CTF**). Please note that the **Effective Date** is not available if you are importing pupil/students into a pre-admission group.

For more information, please refer to the *Importing and Exporting CTFs* chapter in the *Setting Up and Administering SIMS* handbook.

Dinner Money 7

New Features

This release includes the following new features:

- **Absent Code in the Dinner Register**

Tools | Dinner Money | Setup

The **AttCode 'N' as Not Present** check box has been added to the **General Settings** panel on the **Dinner Money Setup Detail** page. When selected (along with the **Attendance Link** check box), the Absent Code N in Attendance is displayed as an Absent (AB) code in the Dinner Register.

For more information, please refer to the *Setting up Dinner Money* chapter in the *Setting Up and Maintaining Dinner Money in SIMS* handbook.

- **Pupil Not Present Marks in the Attendance Register**

Routines | Dinner Money | Autofill Default Meals

The Autofill routine now takes into account any Pupil Not Present marks in the Attendance Register, if the **Attendance Link** check box is selected on the **Dinner Money Setup Detail** page.

For more information, please refer to *Flood Filling all Pupils/Staff with Default Meals* in the *Recording Meals* chapter of the *Dinner Money in SIMS User Guide*.

- **Indication of Pupils who are Eligible for Free School Meals**

Focus | Dinner Money | Edit Pupil Meals

A green triangle is now displayed in the top left-hand corner of the register cell on all days that the pupil is eligible for free school meals (this functionality is not available in **Focus | Dinner Money | Record Pupil Meals**).

- **Total Meals on the Dinner Register**

Focus | Dinner Money | Record Pupil Meals

A total of the meals recorded is now displayed at the top of the Dinner Register.

For more information, please refer to the *Recording Meals* chapter in the *Dinner Money in SIMS User Guide*.

- **FSM Eligibility in Pupil Payments**

Focus | Dinner Money | Pupil Payments

You can now display a column showing when a pupil is eligible for free school meals.

For more information, please refer to the *Recording Payments* chapter in the *Dinner Money in SIMS User Guide*.

- **Reporting Dictionary**

The Reporting Dictionary now includes Default Meals (under the Dietary section), Opening Balance, Current Balance and a flag indicating that FSM has been declined (i.e. a parent has provided payment for free meals) under the Dinner Money section.

Enhancements

This release includes enhancements in the following areas:

- **Dinner Money Reports**

- The Catering Return and Banking Return are now available from **Reports | Dinner Money** as well as **Focus | Dinner Money**.
- **None** and **All** options have been added as a **Group Type** for the following reports: Catering Return, Kitchen Statistics, Transaction List by Type, Transaction List by Number, Pupil Balances and Pupil Detailed Statement of Account.

The **All** option returns data for all Group Types including None. The **None** option returns data for all individuals who have no current year or registration group and would otherwise be missed off the report.

- On the **Kitchen Statistics** report, a wider gap has been created between the **Total School Provided** and **Total Own Provided** lines in the report. Additionally, when a single date is selected, **Today's Meal Type** is displayed as a separate column in the **Special Meal Requirements** table.
- All table borders have been changed from black to grey to make it easier to read the information.

For more information, please refer to the *Running Dinner Money Reports* chapter in the *Dinner Money in SIMS User Guide*.

- **Dinner Money Letters**

Reports | Dinner Money | Letters

Where the Home Address Country is the same for the pupil as for the school, the country line is no longer displayed in the Address or Dinner Money letters.

- **FSM Eligibility Change Report**

The **View Current Balance Update Adjustments** report, displayed if FSM eligibility changes impact on meals already recorded, includes additional information on date range, adjustment, quantity and current balance.

- **Recording Meals for Guest Pupils**

Guest Pupils added as an Extra Name to a class register may be allocated a meal on the dinner register, even though it is not possible to record an attendance mark (via **Focus | Dinner Money | Record Pupil Meals**).

- **Default Group for Pupil Individual Statement of Account**

When opening the **Pupil Detailed Statement of Account** report, the criteria selection now defaults to Individual rather than Classes, to reflect common usage (via **Reports | Dinner Money | Finance | Pupil Detailed Statement of Account**).

Fixes

This release includes fixes in the following areas:

- The Autofill Default Meals routine no longer completes meals for members of staff who have left.
- The **Dinner Numbers by Week** report no longer lists old classes.

EMA

Fixes

This release includes a fix in the following area:

- If a pupil has a bonus record for the previous academic year, it is now possible to create a bonus for the current academic year (via **Routines | EMA | Create/Authorise Bonus Payments**).

Examinations Organiser 6.74

New Features

This release includes the following new features:

- **JCQ Formats Version 12**

JCQ has introduced version 12 of the EDI Formats, with effect from September 2009. The changes affect the **Gradeset** fields (increased from one character to four) and the result types, for which there are additional options. The affected processes are basedata import and results import. The basedata changes were implemented in Examinations Organiser 6.74.

The handling of the two new results types introduced by version 12 of the JCQ Formats is included in this release:

- Result type **B** for where a certification grade is to be accompanied by the total **UMS** score on which the grade is calculated.
- Result type **C** for a genuine dimorph, where an item serves both as a certification and a unit under different qualification frameworks (e.g. Advance FSMQ).



*NOTE: Result type **B** is to be used for all GCE certification results except dual awards at A2, because the basedata file structures have not yet been extended to accommodate a four figure maximum mark in the basedata, or a four figure actual outcome in the Results file. This is expected to form part of the September 2010 update of the EDI Formats.*

For more information, please refer to *Importing and Administering Basedata* in the *SIMS Examinations Organiser* handbook.

■ **Inclusion of the Unique Learner Numbers in Reports**

The **Unique Learner Number (ULN)** field has been included in the header of the following reports:

- Student Statement of Entry
- Candidate Timetable
- Individual Timetable
- Statement of Results.

When viewing submission data in the expanded tree view, the **Unique Learner Number (ULN)** appears beneath the **Unique Candidate Identifier (UCI)** field.

■ **Enhanced Flexibility when Formatting Candidate Middle Names**

Greater flexibility has been introduced to enable the formatting of candidate middle names. These changes are applied wherever the **Formatted Name** or **Name on Certificate** fields appear in reports. The following formulae apply:

- Where no **Exam Midname** is recorded, there is no change.
- Where an **Exam Midname** is recorded, it is used exactly as it is, regardless of the global settings.
- Where **Midname Priority** is selected in combination with an **Exam Midname**, the forename is reduced to an initial and the **Exam Midname** is used as recorded.
- Where **Surname Forenames** is selected in combination with an **Exam Midname**, the column is relegated to the end of the name sequence and the **Exam Midname** is used as recorded.
- Where an **Exam Forename** is recorded, it is used exactly as it is, regardless of the global setting.

For more information, please refer to the *Producing Reports* chapter in the *SIMS Examinations Organiser* handbook.

- **Improvements to the Seating Organiser Procedure**

The **Seating Organiser** procedure has been improved so that the correct figure is displayed for capacity.

For more information, please refer to the *Organising Examination Seating* chapter in the *SIMS Examinations Organiser* handbook.

- **Improvements to the Candidate Statement of Results Report**

- The **Element Code** column has been replaced by the **Subject Code**, and an extra space has been allowed to prevent truncation of the **Title** field.
- The point values for GCE results have been corrected.
- Where a unit has the same gradeset as a certification, (e.g. ONAT), points are not shown.
- Additional PI Results that are entered manually are displayed in the report. When the report is exported to the Document Management Server, both the point scores and the additional PI Results are included in the report.

- **Improvements to the Group Performance Analysis Report**

The column alignment in the expanded panel of the display has been corrected to prevent the data from being offset by one column to the right.

For more information, please refer to the *Producing Reports* chapter in the *SIMS Examinations Organiser* handbook.

- **Additional Provisions in PI Calculations**

- AQA's L12 qualification, which has replaced CPWL (Certification of Preparation for Working Life), has been added.
- BTEC Awards at Levels 1 and 2 are now recognised. A small number of these are defined on NDAQ as having Performance Measures, but those that do not are unlikely to be offered by schools. Where this is not the case, manual intervention is required.
- BTEC and ONAT Level 2 Certificate in Science is now recognised as satisfying the Science measure, provided they are manually assigned the QCA subject code of 0008.

For more information, please refer to the *Preparing the Data for the Performance Indicators Reports* chapter in the *SIMS Examinations Organiser* handbook.

- **Additional Gradeset Variants**

The Boards of January basedata has introduced the need for additional variants of gradesets. These are:

- A version of Gradeset JC **U** Result, undifferentiated by level, to handle Edexcel's intention of issuing an equivalent grade with numeric DiDA Unit results.
- Forecast versions of JC 5, JC 7 and JC 9, to enable the handling of forecast grades required for Projects and Principal Learning units at Diploma levels 1, 2 and 3 respectively.
- The missing grade **Q** has been added to all the Result gradesets introduced this year, from JC 4 Result through to JC 14 Result inclusive. This has not effect on the PI Calculations as it does not appear in the PI Equivalence.

- **Checking the Integrity of the Aspect Categories on Basedata Import**

The **Import Process** contains an integrity check to supply aspect category links where exam results have been imported using the **Assessment Manager Resultset Export/Import** facility. This integrity check was previously performed by running Patch **10022**.

Enhancements

This release includes an enhancement in the following area:

- The display order of the **Exam Room Details** form has been changed, to show the most recent exam booking at the top of the list (**via Tools | School Setup | Exam Room**).

Fixes

This release includes fixes in the following areas:

- Marksheets can now be printed to any available printer (**via Focus | Marksheet – Data Entry**).
- It is now possible to produce the **Amendment Audit Trail** report (**via Reports | Entries | Amendment Audit Trail**).
- The **Candidate Statement of Results** report and the **Statement of Entry** report now print according to the stationery settings selected (**via Reports | Results | Candidate Statement of Results and Reports | Entries | Statement of Entry**).

Fees Billing

New Features

This release includes the following new feature:

- **Searching for Pupil/Students**

- **Fees Billing | Charging | Apply Changes**

- When you search for pupil/students in the **Pupil Search** panel, the returned list of pupil/students matching the search criteria is selected by default.

- For more information, please refer to the *Applying a Chargeable Item to a Bill* chapter in the *Fees Billing in SIMS* handbook.

Enhancements

This release includes enhancements in the following areas:

- **Enhancements to Billing Exceptions**

- **Reports | Fees Billing | Billing | Exceptions**

- Enhancements have been made to the criteria selection.
 - Ability to select whether the report is based on Main or Interim bills.

- **Enhancements to Aged Debtors**

- **Reports | Fees Billing | Transactions | Aged Debtors**

- The following enhancements have been made:

- Ability to print the report for specific payment types and for specific pupil statuses.
 - The export file now includes a **Not Due** field, displaying all transactions posted onto the payer's account that are dated later than the date on the report.

- **Enhancements to the Transactions List**

- **Reports | Fees Billing | Transactions | Transactions List**

- The following enhancements have been made:

- Ability to specify the date range of the report.
 - Ability to export the report.
 - The running total is now displayed on the report.

- **Enhancements to Statements**

Reports | Fees Billing | Transactions | Statements

The following enhancements have been made:

- Ability to print the report for specific payment types and for specific pupil statuses.
- Ability to specify the date range of the report.
- Minor label changes.

For more information, please refer to the *Producing Pre-defined Reports* in the *Fees Billing in SIMS* handbook.

- **Enhancements to Direct Debits**

Focus | Fees Billing | Instalments | Direct Debits

The following enhancements have been made:

- The **Instalment Arrangement** panel now displays Payer Reference, Payer Name, Pupil Reference, Pupil Name and Instalment Amount and can be sorted by clicking the column heading.
- It is now possible for pupil/payers to leave and rejoin the same schedule after an instalment has been processed.
- You can now create AUDDIS records before any charge has been applied.
- When adding new payers to a schedule, the **Payers** browser is displayed.

- **Enhancements to BACS Generation**

Focus | Fees Billing | Instalments | BACS Generation

The following enhancements have been made:

- Improvements have been made to the general performance.
- Ability to cancel a whole BACS file before it has sent and remove the original transaction batch.
- The Processing Date has been clarified. There are now separate fields for Processing Date and Collection Date. The Collection Date becomes the Transaction Date on the receipt batch.

- **Enhancements to Fees Details**

Focus | Person | Bill Payer

Focus | Pupil/Student | Pupil/Student Details | Fees Details

The following enhancements have been made:

- The view now displays all transactions (current and historical) by default.
- It is now easier to enter a bank account for a payer.
- It is now easier to see if an AUDDIS file has been sent for a bill payer.

For more information, please refer to the *Managing Direct Debits* chapter in the *Fees Billing in SIMS* handbook.

- **Routines | Fees Billing | Disputed Bills**

This menu route has now been removed. Disputed bills can now be added and viewed through the **Transactions** area of the **Financial Details** panel on both the **Bill Payer Details** page and the pupil/student **Fees Details** page.

- **Routines | Fees Billing | Import Chart of Accounts**

This menu route has been moved and can now be found in **Tools | Fees Billing | Import Chart of Accounts**.

Fixes

This release includes a fix in the following area:

- It is now possible to enter only one decimal point in the **Amount** field, when applying charges (via **Focus | Fees Billing | Charging | Apply Charges**).

FMS 6.124

New Features

This release includes the following new features:

- **FMS Cheque Book Selection for Petty Cash Reimbursement**

A petty cash reimbursement cheque can now be raised from a known FMS cheque book from the **Petty Cash Processing** page (via **Focus | General Ledger | Petty Cash**).

- **SQL 2008 Migration**

From FMS 6.124, FMS is supported on SQL 2008. A tool is available from SOLUS to migrate from SQL/SQL Express 2005. FMS must be upgraded to 6.124 before migrating to SQL/SQL Express 2008. The migration must be carried out before the SIMS/FMS Autumn 2010 release.

Enhancements

This release includes enhancements in the following areas:

- **Budgeting Software Dynamic Link**

A dynamic link has been created to link with third party budgeting software. When this link is set up and the menu routes used, the required data moves between FMS and the budgeting software without requiring additional files to be created and imported.

To facilitate this functionality, an **Interfaces** tab has been added to **Tools | Establishment Details** and a new **Budget Import Parameters** dialog has been added (via **Focus | Budget Management | Import Budget**).

- **User Defined Default for Purchase Ordering Processing List View**

The default display order of purchase orders in the **Purchase Orders** browser can now be defined. The default applies only to the workstation on which it has been defined. The available options are to sort by Order Number or Date in ascending or descending order (via **Tools | User Options**).

- **Reports for Cost Centre Transactions and Central Payments**

A print option has been added to the **Direct Central Payment/Receipt Details** browser, enabling you to print and export the contents of the browser (via **Focus | Central | Central Payment**).

The **Detailed Cost Centre Transactions** report now includes the option to filter by fund (via **Reports | General Ledger | Transactions | Detailed Transactions | Cost Centre Transactions**).

- **Equipment Register - Equipment Holders**

When adding a **Holder** to a piece of equipment on the **Equipment Details Basic** page, the **Holder** browser now displays only current staff. When a member of staff leaves the school, they are now automatically removed as Equipment Holders (via **Focus | Equipment**).

- **Changes to Content Order Handling using OPEN**

Previous versions of FMS validated OPEN content orders using the **Suppliers Account Number** and **XML Ref** fields in **Supplier Details**. FMS 6.124 validates the content order using the school and supplier's DUNs number fields. The **Suppliers Account Number** field may have been populated with the supplier's DUNs number to facilitate the import from OPEN. This can now be edited to display the correct supplier account number.

Fixes

This release includes fixes in the following areas:

- **Cost Centre Transaction Reports Differ**

The **Detailed Cost Centre Transaction** report totals no longer differ from standard **Cost Centre Transaction** reports when invoices are cancelled (via **Reports | General Ledger | Transactions | Detailed Transactions | Cost Centre Transactions**).

- **Unreconciled BACS Payments Included in Bank Account Claim**

The Bank Account Claim with associated Ledger Code Breakdown is often used to populate Central Accounts. To facilitate this, unreconciled BACS payments are now recorded in the Ledger Code Breakdown on the Bank Account Claim.

Independent Returns 2010 (ASCIS)

The updated return for 2010 has been provided. The return date is 21/01/2010 and the date for calculating ages is 31/08/2009.

Independent Returns 2010 (ISC)

The updated return for 2010 has been provided. The return date is 14/01/2009 and the date for calculating ages is 31/08/2009.

Lesson Monitor

New Features

This release includes the following new feature:

- **Bulk Editing Student Involvement Details**

Focus | Lesson Monitor | Take Register

Details about the students involved in a behaviour incident or achievement can be entered using the bulk editing routine. The following details can be edited:

- the **Points** awarded
- their **Role** in the incident, i.e. participant, target, aggressor, witness, bystander (*Behaviour Incidents only*)
- were the **Parents Informed**, i.e. telephone, email, fax or letter
- the **Action Taken**, e.g. cooling off period, daily report, detention, discussed with student, fixed period exclusion, etc. (*Behaviour Incidents only*).
- the **Action Date** (*Behaviour Incidents only*)

- the **Award Given** e.g. commended, certificate, letter to parents or guardian, prize, etc. (*Achievement only*)
- the **Award Date** (*Achievement only*).

For more information, please refer to the *Taking the Register* chapter in the *Lesson Monitor in SIMS* handbook.

Enhancements

This release includes enhancements in the following areas:

- **Non-Compulsory School Age Date Range Functionality in Attendance Reports**

An option has been added to the **Group Analysis by Attendance Category** report and the **Group Analysis by Code** report, which enables you to restrict the report output to include students of a certain age (via **Reports | Lesson Monitor | Group Reports**).

By default, only students of compulsory school age are included in the reports. However, a different date of birth range can be specified by selecting the **Restrict by DOB Range** check box in the report browser, then entering the appropriate dates in the fields below.

- The read-only **Behaviour Today** column on the register now displays the number of today's behaviour incidents for each student, rather than an indicator that the child has had a behaviour incident recorded against them (via **Focus | Attendance | Take Register**).

Fixes

This release includes fixes in the following areas:

- When hovering over a cell in a register, where the cell is close to the edge of the page, the appropriate class information, minutes late and comments are now displayed (via **Focus | Lesson Monitor | Take Register**).
- Blank pages are no longer produced when printing the Persistent Absence reports (via **Reports | Lesson Monitor | Whole Group Student Reports | Persistent Absence Reports**).

Options 5.70

Options 5.70 has been released in 32-bit to enhance compatibility with current Windows technology.

All previous integral links with SQL and Nova-T6 remain the same, and Options 5.70 is available as part of the Nova-T6 satellite executable.

For more information on the new features available in Options 5.70, please refer to the *New Features in Options 5.70* handbook, which can be accessed from our SupportNet website (<http://support.capitaes.co.uk>) Resource Number **15988**.

The SIMS Service Desk does not support the use of Nova-T4 for the creation of the timetable for the Academic Year 2010/11.



IMPORTANT NOTE: Any implementations created in an old version of Options that you might wish to reference should be recovered from backup prior to upgrading to Options version 5.70. If this is not done, old implementations will not be available for use with 5.70.

New Features

This release includes the following new features:

- **Solution Editor Page**

A new **Solution Editor** page has been provided to improve flexibility and to enable you to create and view all the allocations, class memberships, blocks and course information in one place. The page enhances the existing Options functionality by providing greater overall interaction and improved visibility of the decisions made.

- **Clash Analysis Report**

The **Clash Analysis** report has also been provided to enable you to view details of Options failures, and to assist in resolving as many of these as possible.

Enhancements

This release includes an enhancement in the following area:

- **Summary Total Clash Table Report**

The **Clash Table** report, which enables you to investigate the impact of allocating pairs of courses to the same block, has been amended for clarity.

Personnel

New Features

- **Multiple Single Central Record**

Reports | Run Report | Focus | Staff

This report provides a list of the checks that have been carried out on a member of staff, in line with Ofsted requirements.

Fixes

This release includes a fix in the following area:

- Legal names and previous names are no longer displayed in the **Find Staff** browser if they do not have the appropriate permissions (via **Focus | Person | Staff**).

PLASC Return 2010

PLASC Return Dates

The dates for the PLASC Return 2010 are:

- Census Day – 12/01/2010.
- Learning Activities Collected From – 22/09/2009
- Learning Activities Collected To – 12/01/2010
- Age at Date – 31/08/2009

New Features

This release includes the following new feature:

- **Basic Skills Report**

The **Basic Skills** report is new for PLASC 2010.

For more information, please refer to the *Creating and Validating the Return* chapter in the *Producing the PLASC 2010 Return* handbook appropriate to your school.

Profiles

Fixes

This release includes fixes in the following areas:

- Comment selections with bullet points no longer display a preceding carriage return when printing pupil/student profiles (via **Focus | Profiles | Student Profiles**).
- The Comment Usage Analysis report no longer prints a blank page after each printed page (via **Reports | Profiles | Comment Usage Analysis**).
- It is now possible to print Data Entry Sheets for classes, registration groups and year groups that contain an **&** in their name (via **Focus | Profiles | Session Manager**).

School Census Spring Return 2010



WARNING: *The School Census Autumn 2009 return must be completed and accepted by the authorising body before upgrading to the SIMS 2009 Autumn Main Release (7.124).*

When the SIMS 2009 Autumn Main Release is applied, the 2008/2009 School Census menu routes are removed.

Spring Return 2010 Dates:

- Census Day – 21/01/2010
- Attendance – 01/09/2009 (or earlier) – 31/12/2009
- Exclusions – 13/04/2009 – 31/08/2009
- Age at Date – 31/08/2009

New Features

This release includes the following new feature:

- **Staff and General Reports**

Three new detailed reports are included for Spring 2010:

Staff Report

Class Report

General Report.

For more information, please refer to the *Creating and Validating the Return* chapter in the *Producing the School Census Spring 2010 Return* handbook appropriate to your school.

School Workforce Census Spring Return 2010



WARNING: *The School Workforce Census Autumn 2009 return must be completed and accepted by the authorising body before upgrading to the SIMS 2009 Autumn Main Release (7.124).*

When the SIMS 2009 Autumn Main Release is applied, the 2008/2009 School Workforce Census menu routes are removed.

New Features

This release includes the following new feature:

- **SWC 2010 Report and SWC Spring 2010**

Reports | Run Report | Focus | Staff

The **SWC 2010** report displays School Workforce Census details for staff who are eligible for inclusion in School Workforce Census returns in 2010. The **SWC Spring 2010** report displays School Workforce Census details for staff who are eligible for inclusion in the School Workforce Census Spring 2010 Return.

Spring Return 2010 Dates:

- Census Day – 21/01/2010
- Absence – 01/01/2009 – 31/12/2009
- Continuous Contracts – 01/09/2009 – 31/12/2009

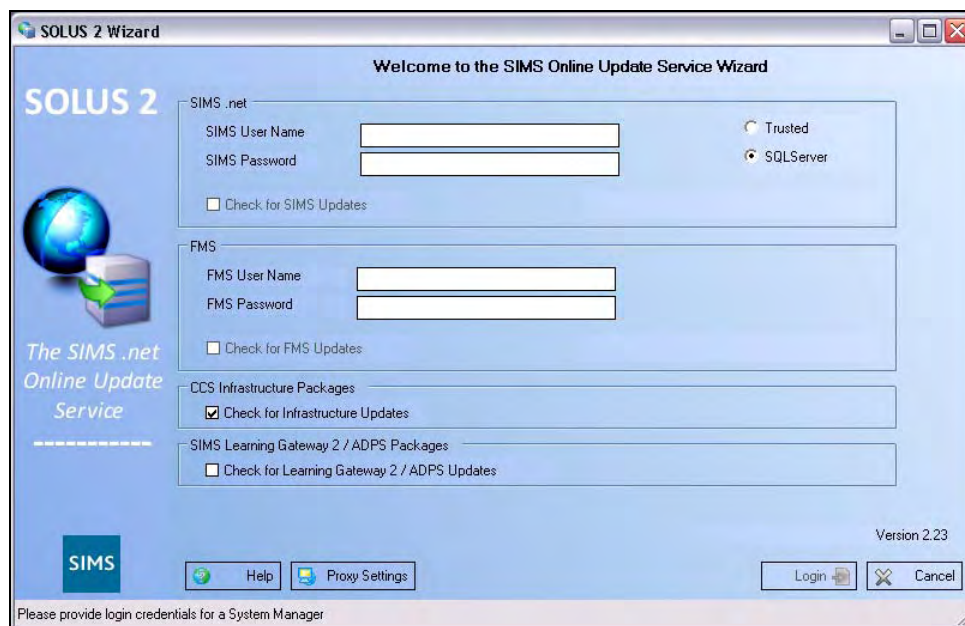
SIMS Learning Gateway 2

For information on the new version of SIMS Learning Gateway 2, please refer to the release notes that will be made available from our SOLUS website (<http://www.capitaes.co.uk/solus>) on product release.

SOLUS³ Phase 1

SOLUS³ Phase 1 enables the automated deployment and upgrade of SIMS onto workstation PCs.

In order to download this utility, select the **Check for Infrastructure Updates** check box in the SOLUS2 download wizard. This is a large download (approximately 600MB) and therefore, this check box is deselected by default. Selecting to download this file affects the download time.



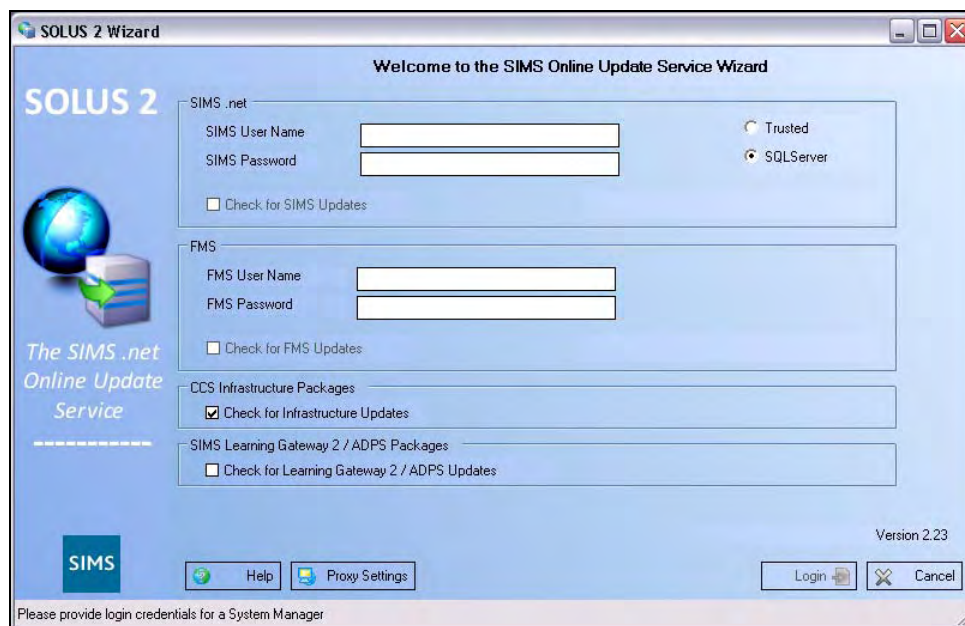
The download places the package file containing the SOLUS³ setup files in the \SIMS\Setups folder on the SIMS File Server.

For more information on using SOLUS³, please refer to the SOLUS³ Phase 1 handbook, available from SupportNet (<http://support.capitaes.co.uk>).

SQL Server 2008 Migration

This utility enables schools to migrate their SIMS and FMS systems from Microsoft SQL Server 2005 to Microsoft SQL Server 2008. This process is currently optional but must be undertaken before October 2010.

In order to download this utility, select the **Check for Infrastructure Updates** check box in the SOLUS2 download wizard. This is a large download (approximately 600MB) and therefore, this check box is deselected by default. Selecting to download this file affects the download time.



The download places the package file containing the SQL Migration setup files in the \SIMS\Setups folder on the SIMS File Server.

For more information on migrating your SIMS and FMS system, please refer to the Migrating SIMS to SQL 2008 handbook and the Migrating FMS to SQL 2008 handbook, available from SupportNet (<http://support.capitaes.co.uk>).

STAR

New Features

This release includes the following new features:

- **Recording of a VISA Number**

It is now possible to record a pupil/student's VISA number.

For more information, please refer to the *Maintaining Pupil/Student Information* chapter in the *Managing Pupil/Students in SIMS* handbook.

- **Searching for a Pupil/Student using an Admission Number**

A number of pupil/student browsers have been amended to enable the search by Admission Number. Where a browser has changed, the appropriate sections of the *Managing Pupil/Students in SIMS* handbook has been changed.

Enhancements

This release includes enhancements in the following areas:

- The **Quick Note** field has been added to the Reporting Dictionary, enabling you to report on this field.
- The wording on the Data Collection Sheet report has changed from DFES to DSCF (via **Reports | Run Report | Focus | Student | Data Collection Sheets**).
- It is now possible to add more than one agency to an agency type.
- The size of the behaviour/achievement dialog has been increased, when accessed through Take Register.
- An additional option has been added when sending a message to filter by those teachers associated with the students today.

Fixes

This release includes a fix in the following area:

- It is now possible to save all error messages produced in SIMS.

Updated Handbooks Available with this Release

The following handbooks have been produced for this release. Please refer to the *What's New in This Release* section in each handbook for details of the specific changes.

- Active Directory Provisioning 2 for System Administrators
- Assessment in SIMS
- Attendance in SIMS
- Cover 7 in SIMS
- Lesson Monitor in SIMS
- Maintaining Pupil/Students in SIMS
- Migrating FMS to SQL 2008 (*available from SOLUS/SupportNet only*)
- Migrating SIMS to SQL 2008 (*available from SOLUS/SupportNet only*)
- Options 5.70 New Features Document (*available from SupportNet only*)
- Producing the School Workforce Census Spring 2010 Return
- Producing the Spring PLASC 2010 Return Welsh Nursery
- Producing the Spring PLASC 2010 Return Welsh Primary
- Producing the Spring PLASC 2010 Return Welsh Secondary
- Producing the Spring PLASC 2010 Return Welsh Special
- Producing the Spring School Census 2010 English Nursery Schools
- Producing the Spring School Census 2010 English Primary/Middle deemed Primary Schools
- Producing the Spring School Census 2010 English Secondary/Middle deemed Secondary Schools
- Producing the Spring School Census 2010 English Special Schools
- Reporting in SIMS
- Setting Up and Administering SIMS
- SIMS Examinations Organiser
- SIMS Learning Gateway 2 for System Administrators
- SIMS Pre-Defined Reports Catalogue
- SOLUS³ Phase 1 (*available from SupportNet only*)